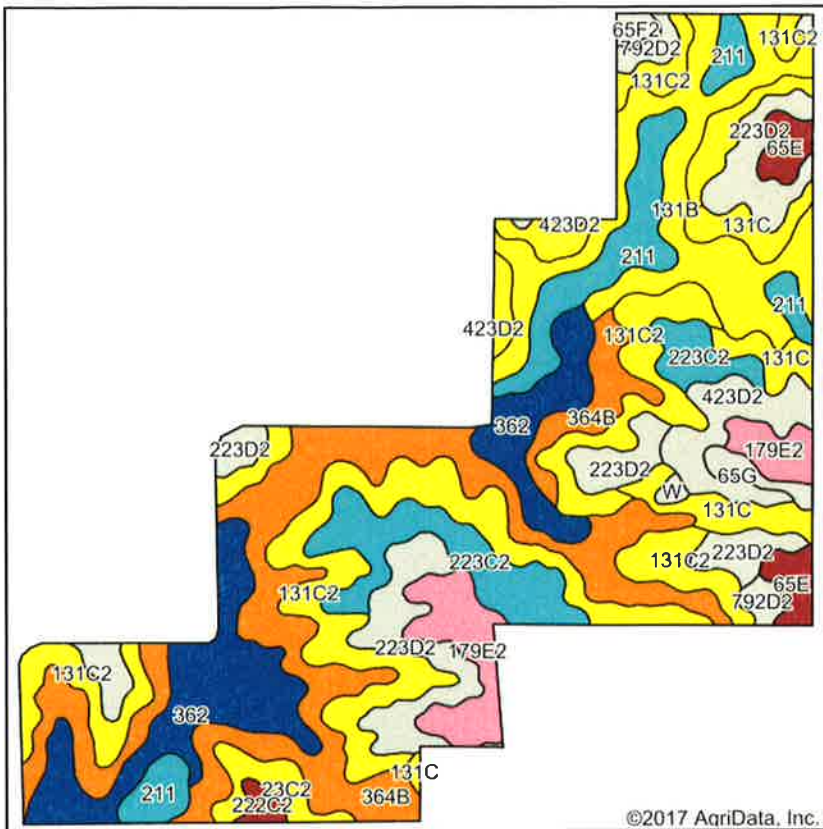
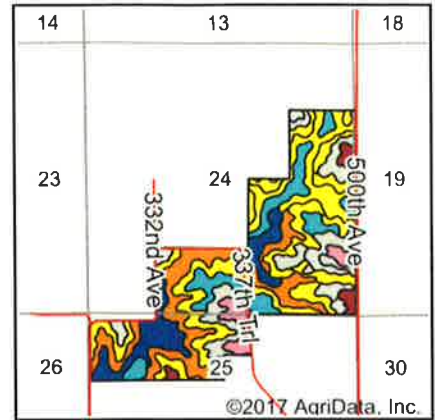


Soils Map



Soils data provided by USDA and NRCS.



State: **Iowa**
 County: **Lucas**
 Location: **24-72N-20W**
 Township: **Cedar**
 Acres: **305**
 Date: **1/9/2018**



Area Symbol: IA117, Soil Area Version: 25

Code	Soil Description	Acres	Percent of field	CSR2 Legend	Soil Drainage	Non-Irr Class *c	CSR2**	CSR
131C2	Pershing silty clay loam, 5 to 9 percent slopes, moderately eroded	63.03	20.7%		Somewhat poorly drained	IIIe	62	45
364B	Grundy silty clay loam, 2 to 5 percent slopes	56.00	18.4%		Somewhat poorly drained	Ile	72	75
362	Haig silt loam, 0 to 2 percent slopes	32.83	10.8%		Poorly drained	IIw	83	70
223D2	Rinda silty clay loam, 9 to 14 percent slopes, moderately eroded	30.53	10.0%		Poorly drained	IVe	19	9
131B	Pershing silt loam, 2 to 5 percent slopes	29.16	9.6%		Somewhat poorly drained	IIIe	70	67
211	Edina silt loam, depressional, 0 to 1 percent slopes	19.33	6.3%		Poorly drained	IIw	41	57
223C2	Rinda silty clay loam, 5 to 9 percent slopes, moderately eroded	19.09	6.3%		Poorly drained	IVw	45	22
179E2	Gara clay loam, 14 to 18 percent slopes, moderately eroded	13.54	4.4%		Well drained	VIe	23	33
131C	Pershing silt loam, 5 to 9 percent slopes	12.73	4.2%		Somewhat poorly drained	IIIe	65	49
423D2	Bucknell silty clay loam, 9 to 14 percent slopes, moderately eroded	9.43	3.1%		Somewhat poorly drained	IVe	7	13
65E	Lindley loam, 14 to 18 percent slopes	5.91	1.9%		Well drained	VIe	33	30
23C2	Arispe silty clay loam, 5 to 9 percent slopes, moderately eroded	4.51	1.5%		Somewhat poorly drained	IIIe	62	50
792D2	Armstrong clay loam, 9 to 14 percent slopes, moderately eroded	3.31	1.1%		Somewhat poorly drained	IVe	5	13
65G	Lindley loam, 25 to 40 percent slopes	2.23	0.7%		Well drained	VIIe	7	5
222C2	Clarinda silty clay loam, 5 to 9 percent slopes, moderately eroded	1.45	0.5%		Poorly drained	IVw	34	25
65F2	Lindley loam, 18 to 25 percent slopes, moderately eroded	1.25	0.4%		Well drained	VIIe	10	8
W	Water	0.67	0.2%				0	0
Weighted Average							54.8	48.5

**IA has updated the CSR values for each county to CSR2.

*c: Using Capabilities Class Dominant Condition Aggregation Method