

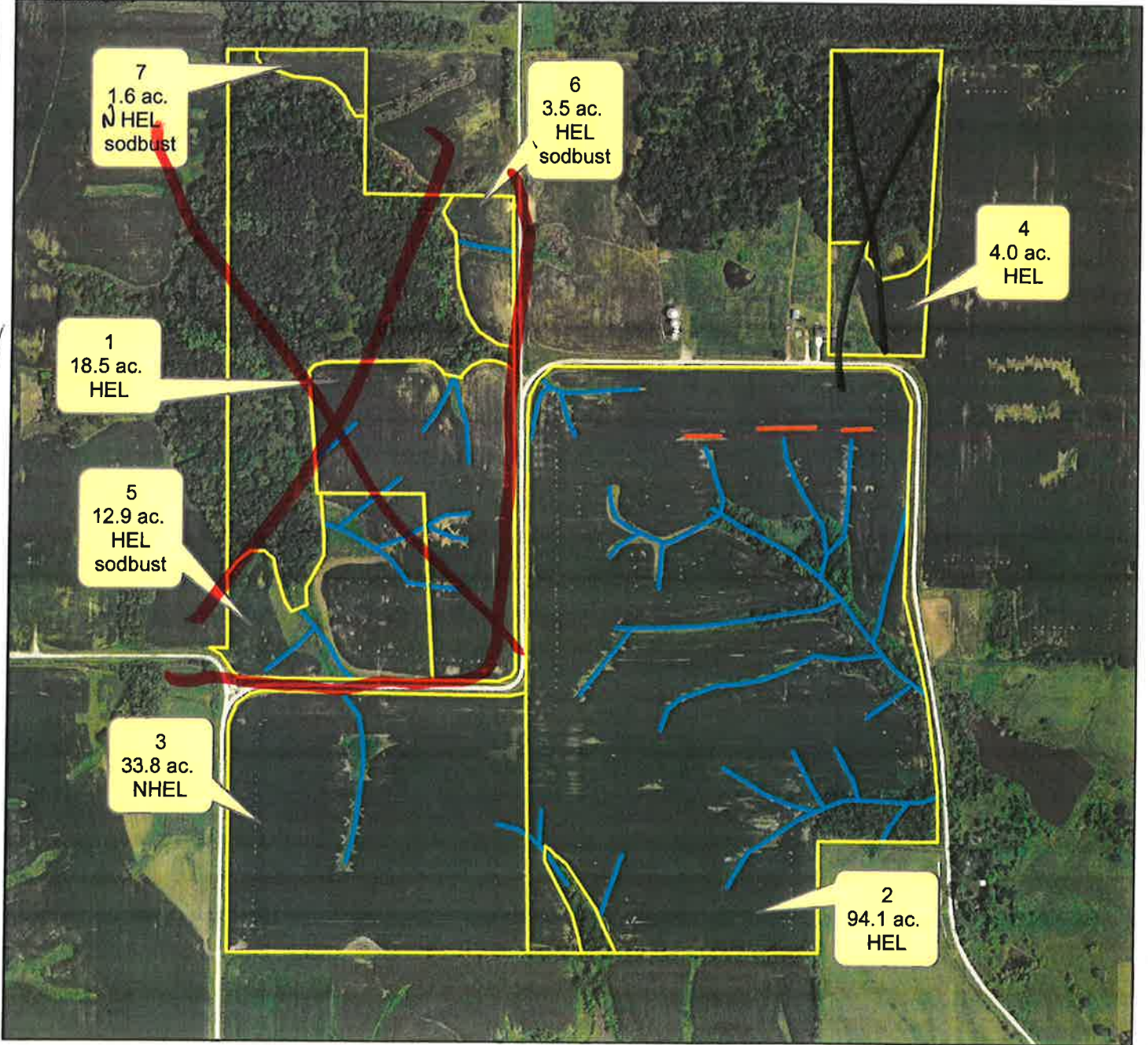
t1545 Conservation Plan Map

Customer(s): RED HAW INC
District: LUCAS SOIL & WATER CONSERVATION DISTRICT

Field Office: CHARITON SERVICE CENTER
Agency: NRCS

Legal Description: Sec. 24 25 Cedar f1155 t1545
2014 imagery

State and County: IA, Wayne County, Iowa



Legend

 Consplan-t1545

 Terraces

 waterway / critical area seeding





CORYDON SERVICE CENTER
 300 S LAFAYETTE ST
 CORYDON, IA 50060-1644
 (641) 872-2670

GARY APPLGATE
 DISTRICT CONSERVATIONIST

Conservation Plan

RED HAW INC
 PO BOX 879
 CHARITON, IA 50049

Crop

Tract: 1545

Conservation Crop Rotation

A CROP ROTATION of soybeans, corn, soybeans, oats, meadow, (6 years) will be used for this field.

Seeding failed in 2017. Corn in 2018 then reseed in 2019 for 7 years. Field will go back to beans in 2026.

Field	Planned Amount	Month	Year	Applied Amount	Date
5	12.9 ac	4	2015		
Total:	12.9 ac				

*10/10/17
 JB*

Conservation Crop Rotation

A CROP ROTATION of corn/soybeans will be used on this field.

Field	Planned Amount	Month	Year	Applied Amount	Date
1	18.5 ac	4	2015		
2	94.1 ac	4	2015		
4	4 ac	4	2015		
6	3.5 ac	4	2015		
7	1.6 ac	4	2015		
Total:	121.7 ac				

Conservation Crop Rotation

These fields are considered NHEL. A corn / soybean rotation is recommended.

Field	Planned Amount	Month	Year	Applied Amount	Date
3	33.8 ac	4	2015		
Total:	33.8 ac				

Residue and Tillage Management, No-Till

A crop rotation of corn soybeans will be used on this field. The following conservation tillage system will be used: Corn is no-tilled into soybean stubble leaving at least 50% of the ground covered by residue after planting.

Soybeans are no-tilled into corn stalks leaving at least 70% of the ground covered by residue after planting.

The injection of hog manure can be substituted for NH₃ as long as it can be no-tilled into it following the injection. 2/8/16 JB

Field	Planned Amount	Month	Year	Applied Amount	Date
1	18.5 ac	4	2015		
2	94.1 ac	4	2015		
4	4 ac	4	2015		
6	3.5 ac	4	2015		
7	1.6 ac	4	2015		
Total:	121.7 ac				

Residue and Tillage Management, Reduced Till

Soybeans will be no-tilled into meadow leaving at least 20% of the ground covered with residue after planting. Corn will be no-tilled into soybean stubble leaving at least 30% of the ground covered with residue after planting. Soybeans will be no-tilled into the corn stalks leaving at least 60% residue after planting. The soybean stubble may be spring tilled leaving at least 20% of the ground covered with residue after planting meadow with oats as a cover crop.

The injection of hog manure can be substituted for NH₃ as long as it can be no-tilled into it following the injection. 2/8/16 JB

Field	Planned Amount	Month	Year	Applied Amount	Date
5	12.9 ac	4	2015		
Total:	12.9 ac				

Grassed Waterway

Waterways are required as shown on map

Field	Planned Amount	Month	Year	Applied Amount	Date
1	1.9 ac	4	2015		
2	12 ac	4	2015		
4	0.1 ac	4	2015		
5	1 ac	4	2015		
6	0.3 ac	4	2015		
7	0.1 ac	4	2015		
Total:	15.4 ac				

Contour Farming

Perform tillage and planting operations on a 2% contour to increase water infiltration and reduce concentrated water flow.

Field	Planned Amount	Month	Year	Applied Amount	Date
1	18.5 ac	4	2015		
2	94.1 ac	4	2015		
4	4 ac	4	2015		
5	12.9 ac	4	2015		
6	3.5 ac	4	2015		
7	1.6 ac	4	2015		
Total:	134.6 ac				

CERTIFICATION OF PARTICIPANTS

Revised 10/10/17

Red Hawk Inc. *Zela Shello* Pres. 2-10-16
 RED HAWK INC DATE

X _____
 Signature Date

CERTIFICATION OF:

DISTRICT CONSERVATIONIST
 GARY APPLGATE DATE

CONSERVATION DISTRICT
 LUCAS SOIL & WATER CONSER DATE

PUBLIC BURDEN STATEMENT

According to the Paperwork Reduction Act of 1995, an agency may not conduct or sponsor, and a person is not required to respond to a collection of information unless it displays a valid OMB control number. The valid OMB control number for this information collections is 0578-0013. The time required to complete this information collection is estimated to average 45/0.75 minutes per response, including the time for reviewing instructions, searching existing data sources, gathering and maintaining the data needed, and completing and reviewing the collection information.

PRIVACY ACT

The above statements are made in accordance with the Privacy Act of 1974 (5 U.S.C 522a). Furnishing this information is voluntary; however failure to furnish correct, complete information will result in the withholding or withdrawal of such technical or financial assistance. The information may be furnished to other USDA agencies, the Internal Revenue Service, the Department of Justice, or other state or federal law enforcement agencies, or in response to orders of a court, magistrate, or administrative tribunal.

USDA NON-DISCRIMINATION STATEMENT

The U.S. Department of Agriculture (USDA) prohibits discrimination against its customers. If you believe you experienced discrimination when obtaining services from USDA, participating in a USDA program, or participating in a program that receives financial assistance from USDA, you may file a complaint with USDA. Information about how to file a discrimination complaint is available from the Office of the Assistant Secretary for Civil Rights. USDA prohibits discrimination in all its programs and activities on the basis of race, color, national origin, age, disability, and where applicable, sex (including gender identity and expression), marital status, familial status, parental status, religion, sexual orientation, political beliefs, genetic information, reprisal, or because all or part of an individual's income is derived from any public assistance program. (Not all prohibited bases apply to all programs.) To file a complaint of discrimination, complete, sign, and mail a program discrimination complaint form, available at any USDA office location or online at www.ascr.usda.gov, or write to:

USDA Office of the Assistant Secretary for Civil Rights
 1400 Independence Avenue, SW.
 Washington, DC 20250-9410

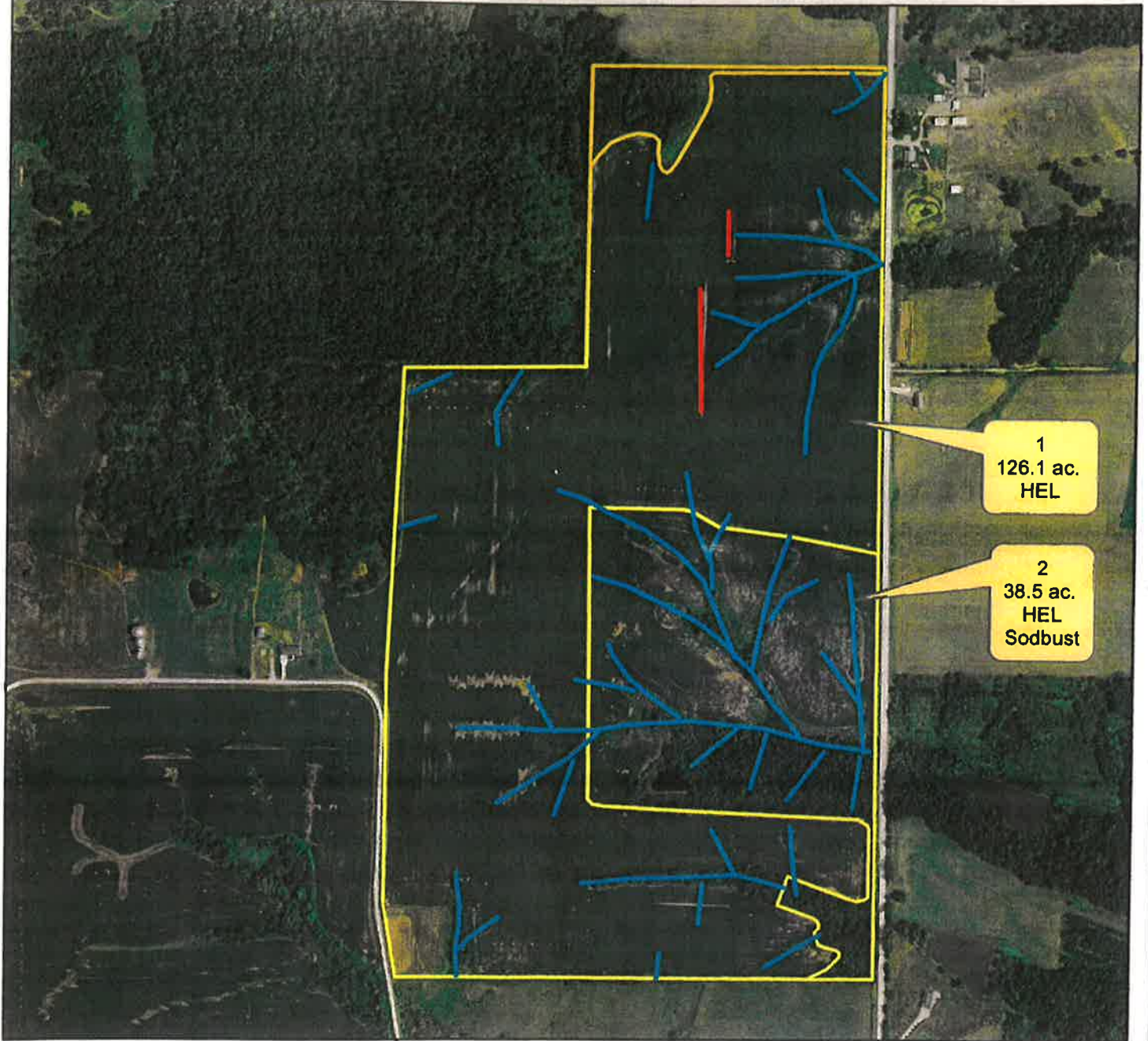
Or call toll free at (866) 632-9992 (voice) to obtain additional information, the appropriate office or to request documents. Individuals who are deaf, hard of hearing, or have speech disabilities may contact USDA through the Federal Relay service at (800) 877-8339 or (800) 845-6136 (in Spanish). USDA is an equal opportunity provider, employer, and lender. Persons with disabilities who require alternative means for communication of program information (e.g., Braille, large print, audiotape, etc.) should contact USDA's TARGET Center at (202) 720-2600 (voice and TDD).

t1509 Conservation Plan Map




Customer(s): RED HAW INC
District: LUCAS SOIL & WATER CONSERVATION DISTRICT

Field Office: CHARITON SERVICE CENTER
Agency: USDA- NRCS

Legal Description: Cedar 24 f908 t1509
2014 imagery



Legend

-  Waterway / Critical Area Seeding
-  Terraces
-  Consplan





CHARITON SERVICE CENTER
 21792 490TH ST
 CHARITON, IA 50049
 (641) 774-2119

GARY APPLGATE
 DISTRICT CONSERVATIONIST

Conservation Plan

RED HAW INC
 PO BOX 879
 CHARITON, IA 50049

OBJECTIVE(S)

Compliance Plan

Crop

Tract: 1509

Conservation Crop Rotation

A CROP ROTATION of corn/soybeans will be used on this field.

Field	Planned Amount	Month	Year	Applied Amount	Date
1	126.1 ac	4	2015		
Total:	126.1 ac				

Conservation Crop Rotation

A crop rotation of Soybeans/Corn/Soybeans/Oats/Meadow/Meadow/Meadow/Meadow will be used on this/these field(s).

Field	Planned Amount	Month	Year	Applied Amount	Date
2	38.5 ac	4	2015		
Total:	38.5 ac				

Residue and Tillage Management, No-Till

This/These fields will be farmed using a continuous no-till system. (A no-till system is one where full width tillage of any kind is never used.) Lime and granular fertilizer are not incorporated with tillage. Soybeans are planted into corn stubble leaving a minimum of 60% surface residue after planting. Corn is planted into bean stubble leaving a minimum of 40% surface residue after planting. Anhydrous can be used with this system when applied on the contour. **It takes up to 7 years before soil structure is at a point where no-till erosion benefits are fully reached.

The injection of hog manure can be substituted for N₂ as long as it can be no-tilled into it following the injection. 2/8/16 JB

Field	Planned Amount	Month	Year	Applied Amount	Date
1	126.1 ac	4	2015		
Total:	126.1 ac				

Residue and Tillage Management, Reduced Till

All row crops will be no-tilled but tillage can be performed on sod going to row crop. Tillage can be performed for new seeding leaving 20% residue when bean stubble and 30% residue when corn stubble. Meadow seeding will have oats (1 – 1 ½ bu/ac) for cover crop. Seeding will have 2.5 lbs./ac. brome or 2 lbs./ac. orchard grass in the mixture.

Field	Planned Amount	Month	Year	Applied Amount	Date
2	38.5 ac	4	2015		
Total:	38.5 ac				

Contour Farming

Perform all field operations on the contour to increase water infiltration and reduce concentrated water flow. Row grade not to exceed 2%.

Field	Planned Amount	Month	Year	Applied Amount	Date
1	126.1 ac	4	2015		
2	38.5 ac	4	2015		
Total:	164.6 ac				

Grassed Waterway

Waterways will be constructed/maintained as shown on the plan map and other areas where ephemeral erosion is a problem. Waterways are recommended to have a minimum top width of 30' and a depth of 1' and parabolic in shape. Waterways will be seeded/maintained in a sod forming grass (Brome 20 lbs./ac., perennial ryegrass 5lbs./ac., and 1.5 bu. Oats if spring seeded or 1 bu. Cereal rye with a late summer/dormant seeding). Some waterways will require greater width and depth to function properly. Contact your NRCS office for design information.

Field	Planned Amount	Month	Year	Applied Amount	Date
1	7.1 ac	4	2015		
2	6.2 ac	4	2015		
Total:	13.3 ac				

CERTIFICATION OF PARTICIPANTS

Red Hawk Inc. By Jela Shelta Pres. DATE 2-10-16
RED HAW INC DATE

CERTIFICATION OF:

DISTRICT CONSERVATIONIST
GARY APPLGATE DATE

CONSERVATION DISTRICT
LUCAS SOIL & WATER CONSER DATE

PUBLIC BURDEN STATEMENT

According to the Paperwork Reduction Act of 1995, an agency may not conduct or sponsor, and a person is not required to respond to a collection of information unless it displays a valid OMB control number. The valid OMB control number for this information collections is 0578-0013. The time required to complete this information collection is estimated to average 45/0.75 minutes per response, including the time for reviewing instructions, searching existing data sources, gathering and maintaining the data needed, and completing and reviewing the collection information.

PRIVACY ACT

The above statements are made in accordance with the Privacy Act of 1974 (5 U.S.C 522a). Furnishing this information is voluntary; however failure to furnish correct, complete information will result in the withholding or withdrawal of such technical or financial assistance. The information may be furnished to other USDA agencies, the Internal Revenue Service, the Department of Justice, or other state or federal law enforcement agencies, or in response to orders of a court, magistrate, or administrative tribunal.

USDA NON-DISCRIMINATION STATEMENT

The U.S. Department of Agriculture (USDA) prohibits discrimination against its customers. If you believe you experienced discrimination when obtaining services from USDA, participating in a USDA program, or participating in a program that receives financial assistance from USDA, you may file a complaint with USDA. Information about how to file a discrimination complaint is available from the Office of the Assistant Secretary for Civil Rights. USDA prohibits discrimination in all its programs and activities on the basis of race, color, national origin, age, disability, and where applicable, sex (including gender identity and expression), marital status, familial status, parental status, religion, sexual orientation, political beliefs, genetic information, reprisal, or because all or part of an individual's income is derived from any public assistance program. (Not all prohibited bases apply to all programs.) To file a complaint of discrimination, complete, sign, and mail a program discrimination complaint form, available at any USDA office location or online at www.ascr.usda.gov, or write to:

USDA Office of the Assistant Secretary for Civil Rights
1400 Independence Avenue, SW.
Washington, DC 20250-9410

Or call toll free at (866) 632-9992 (voice) to obtain additional information, the appropriate office or to request documents. Individuals who are deaf, hard of hearing, or have speech disabilities may contact USDA through the Federal Relay service at (800) 877-8339 or (800) 845-6136 (in Spanish). USDA is an equal opportunity provider, employer, and lender. Persons with disabilities who require alternative means for communication of program information (e.g., Braille, large print, audiotape, etc.) should contact USDA's TARGET Center at (202) 720-2600 (voice and TDD).